

Guidelines for the Auditor – to use as a reference checklist for the Grading Metrics

1. Sign Language Interpreter should be mandatory for conducting training for Persons with Speech and Hearing Impairment in the placement and /Entrepreneurship cell
Documents to check: Diploma /Certificate in Indian Sign Language Interpreter from Rehabilitation Council of India/ Persons having Sign Language as their mother tongue (born to parents who are deaf) Appointment Letter & Curriculum Vitae
2. Switch boards can be outlined in contrasting colors for Persons with Low Vision. Vinyl tape, acrylic paint (yellow, black, red) can be used for the above purpose.
3. Wheelchair Accessible Toilet cubicles with western commode seats should have a minimum of 2000mmX2200mm clear space, entry door of the toilet should be 900mm wide, opening to the outside, wash basins provided in the corner at a height of 650-680 mm (bottom edge) and 700mm -800mm (top edge) from the floor. Movable and stationary grab bars should be installed at a height of 480 mm on both sides of commode.
4. Allow sufficient space around the water fountain to make it easily accessible for wheel chair users. Depending on the type of water fountain allow a space about 700 mm high and 350 mm deep under the fountain
5. Visual and audio alarms should be installed at strategic locations in all areas including classrooms, lab, toilets, canteen. Audible alarms with 'voice instructions' that can help guide persons with disability to nearest emergency exit can be considered. Fire alarm boxes should be installed. Ideal height for fire alarm boxes and emergency call buttons is 800mm-1000mm. Preferably in contrasting colors from the background walls.
6. Teacher Student Ratio –
 - 30: 1 or less Locomotor Disability, Leprosy Cured, Dwarfism, Acid Attack Victims, Deaf, Hard of Hearing, Speech and Language Disability
 - Teacher Student Ratio 15:1 or less -Blindness, Low Vision, Mental Illness
 - Teacher Student Ratio 10:1 or less -Intellectual Disability (Mental Retardation), Autism, Specific Learning Disability, Hemophilia, Thalassemia, Sickle Cell Anemia, Deaf Blindness, Cerebral Palsy, Parkinson's, Multiple Sclerosis
 - Teacher Student Ratio-5:1 Muscular Dystrophy, Hemophilia, Thalassemia, Sickle Cell Anemia, Deaf Blindness, Cerebral Palsy, Parkinson's, Multiple Sclerosis
7. Trainers should be pass in SCPwD Top up Module (Certificate of SCPwD or Link on SCPwD website)
8. Equipment list job Role wise (Link on SCPwD website/NSDC SMART portal)
9. Ramp shall be finished with non-slip material to enter the building. Minimum width of ramp shall be 1800 mm. with maximum gradient 1:12, length of ramp shall not exceed 9.0 M having double handrail at a height of 800 and 900 mm on both sides extending 300 mm. beyond top and bottom of the ramp. Minimum gap from the adjacent wall to the hand rail shall be 50 mm.
10. For Persons with Blindness and Low Vision, the guiding and warning blocks should be installed Immediately in front of a location where there is obstruction, Immediately in front of an entrance/exit to and from a staircase or multilevel crossing facility, Entrance/exit to institute, Sidewalk section of a guiding or approaching road to the building, Other places where installation of a guiding block for persons with blindness and low vision is considered effective (e.g. locations abruptly changing in level or ramp).

1. Ramp

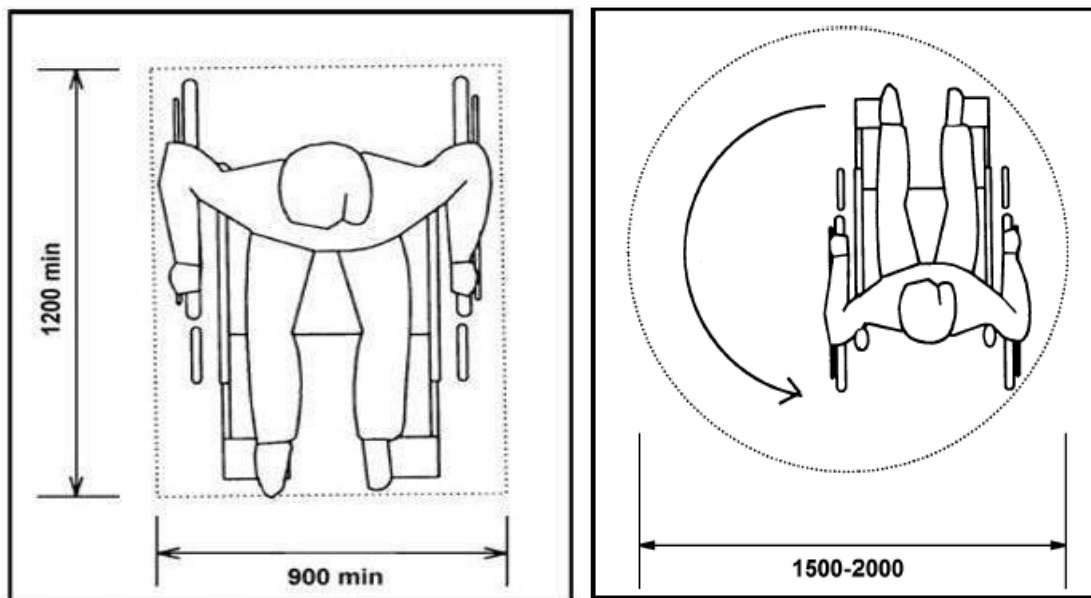


2. Stairs

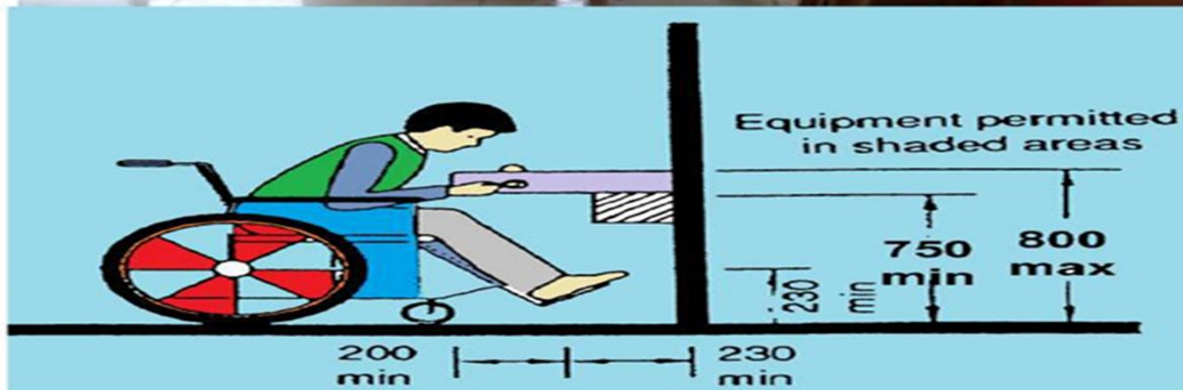




Door Space



Washroom



Common drinking area (water closet)

Signages





Colour Contrast



Guiding and Warning Blocks

