

Skill Council For Persons With Disability



Accessibility

Accessible: Facilities that are designed to be accessible and understandable to all users of a building or external environment.

Accessibility: Accessibility is the degree to which a product, device, service, or environment is available to as many people as possible. Accessibility can be viewed as the "ability to access" and benefit from some system or entity. The concept often focuses on people with disabilities or special needs and their right of access, enabling the use of assistive technology.

Continue...

Audio description: Technique for informing visitors about the visual images and action of a video, stage, or an exhibition space that is undesirable in the narration.

Building: A permanent or temporary structure of any size that accommodates facilities to which people have access.

Building user: A person regardless of age, size, ability or disability using facilities in a building or associated external environment.

Continue...

Grab bar: A bar attached parallel to a wall to provide a handgrip for steadying yourself

Handrail: A metallic or wooden rail serving as a support or guard at the side of stairway, Platform, corridor etc.



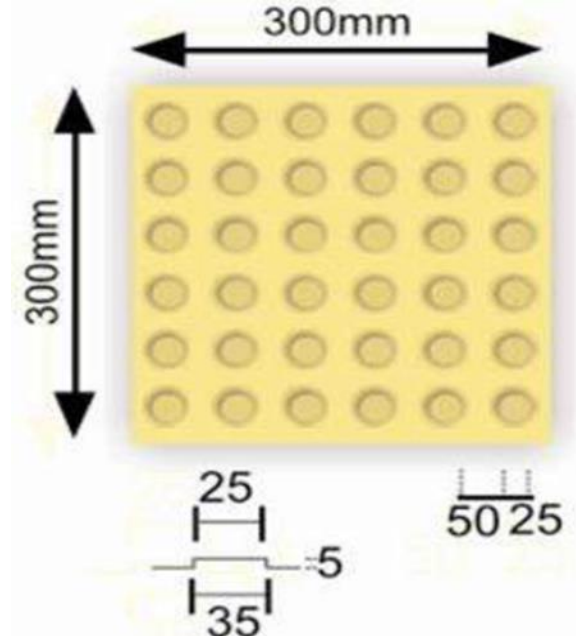
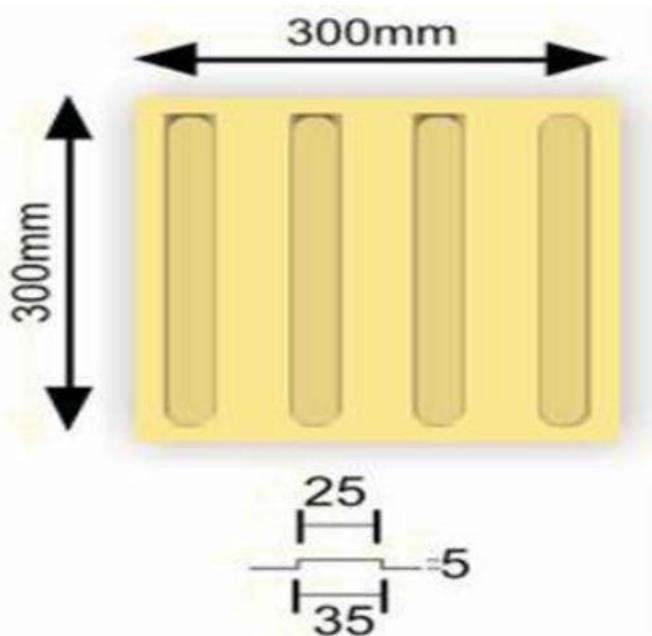
Accessible Route

A continuous, unobstructed path connecting all accessible elements and spaces of a building or facility.



Accessible Route

Directional Tile/Block: A parallel raised bars for guiding the users along an intended safe path.



Continue ...



Continue ...



hand rail 900mm



Hand rail 750mm

contrast colour at
stair edges

Hazard / warning
tile block

Warning Blocks at Landing

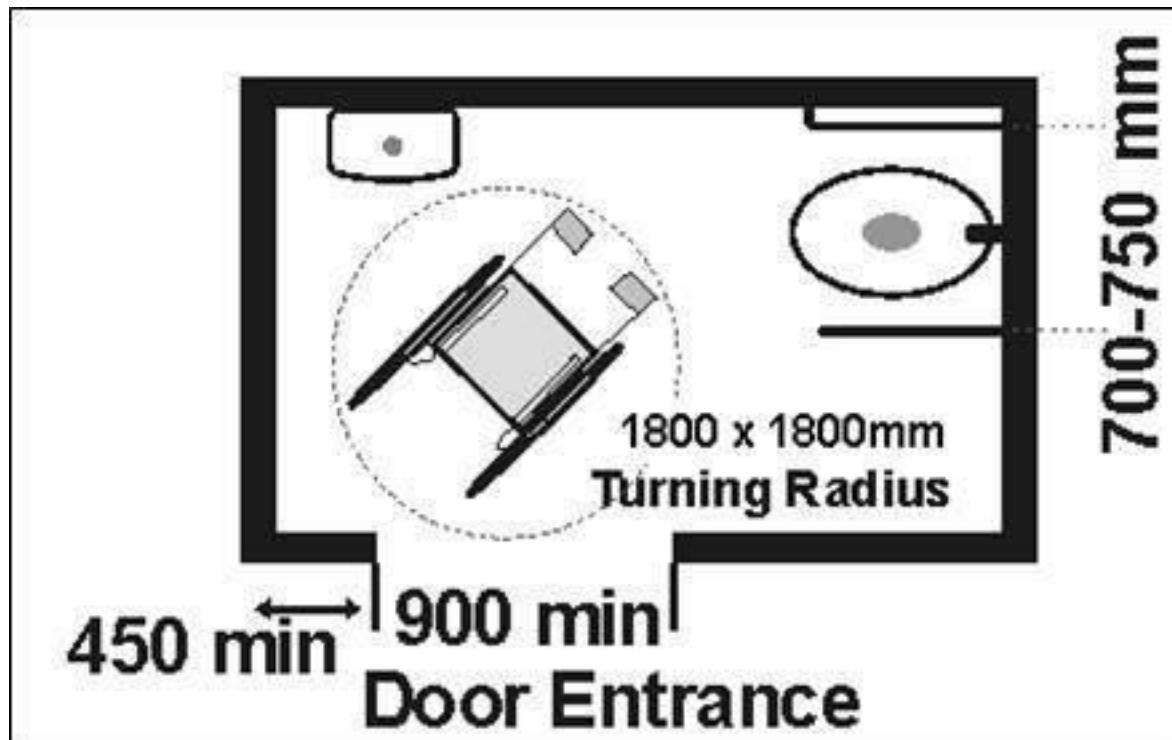


Placement of Warning Blocks for Steps



Maneuvering Space

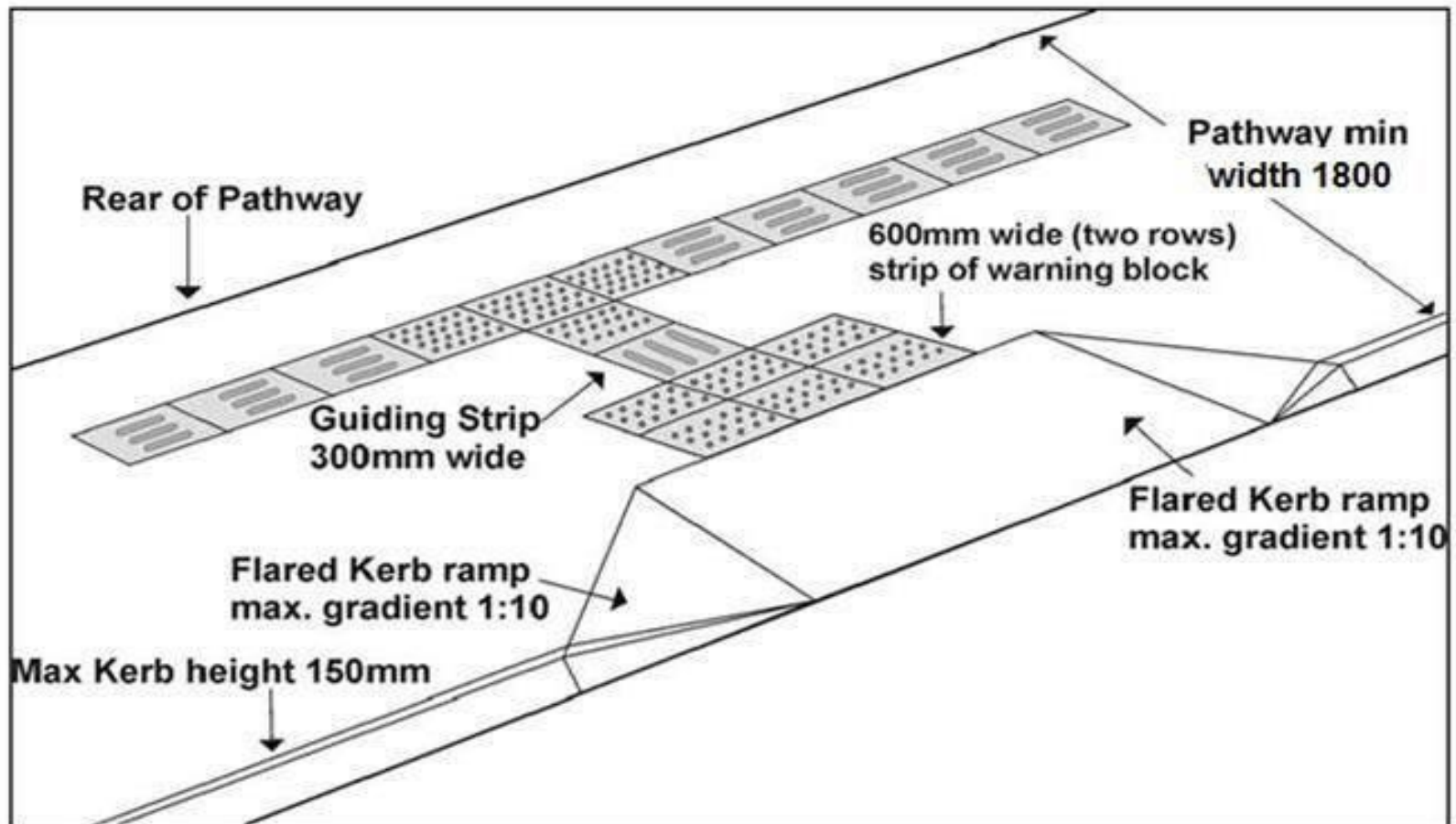
The minimum area needed for a wheelchair user to move in to or out of a place, or along a pathway.



Wheelchair maneuvering space in toilet

Dropped Kerb

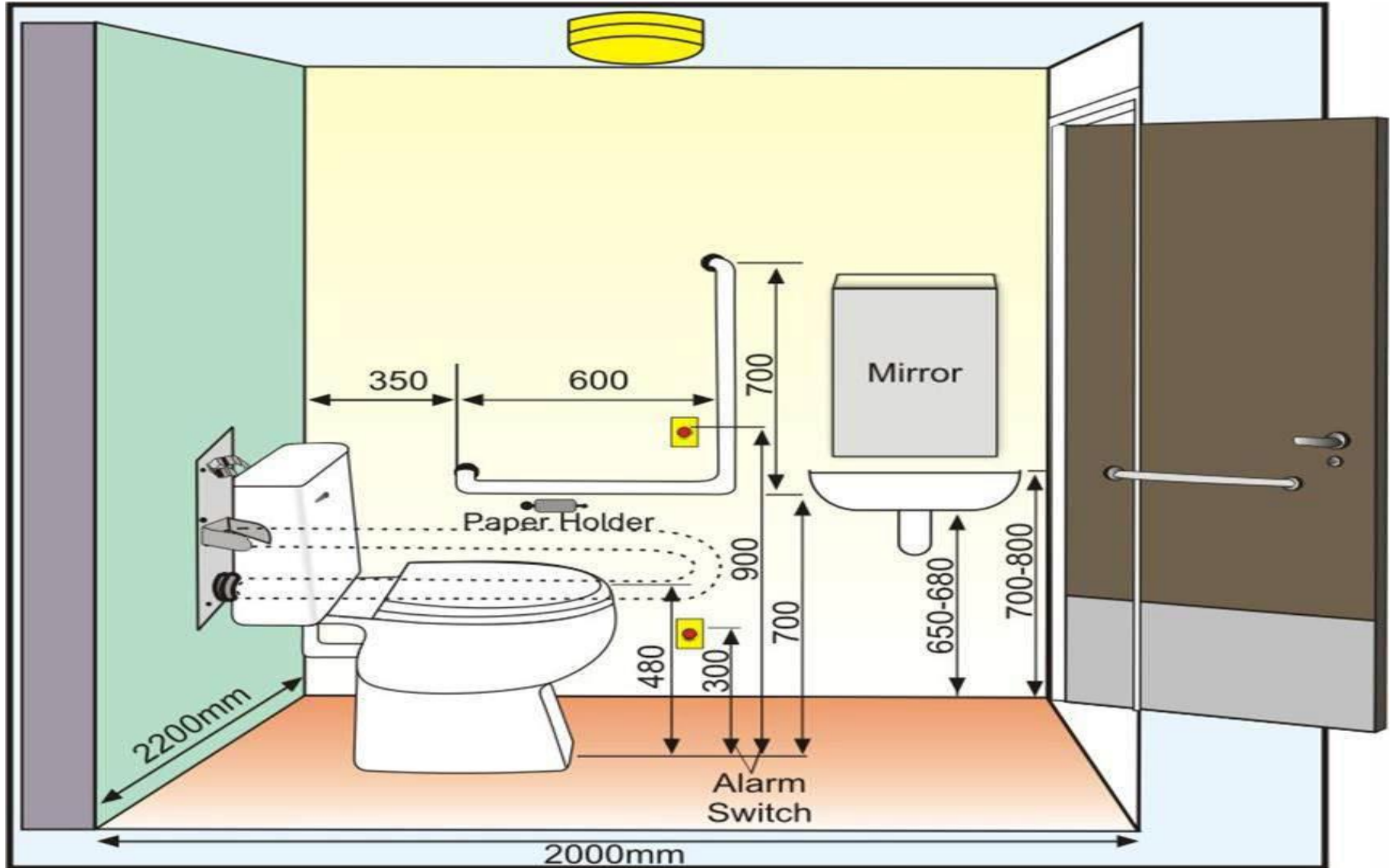
Dropped Kerb: It is like a small ramp built on a footpath or pavement to accommodate the change in level.



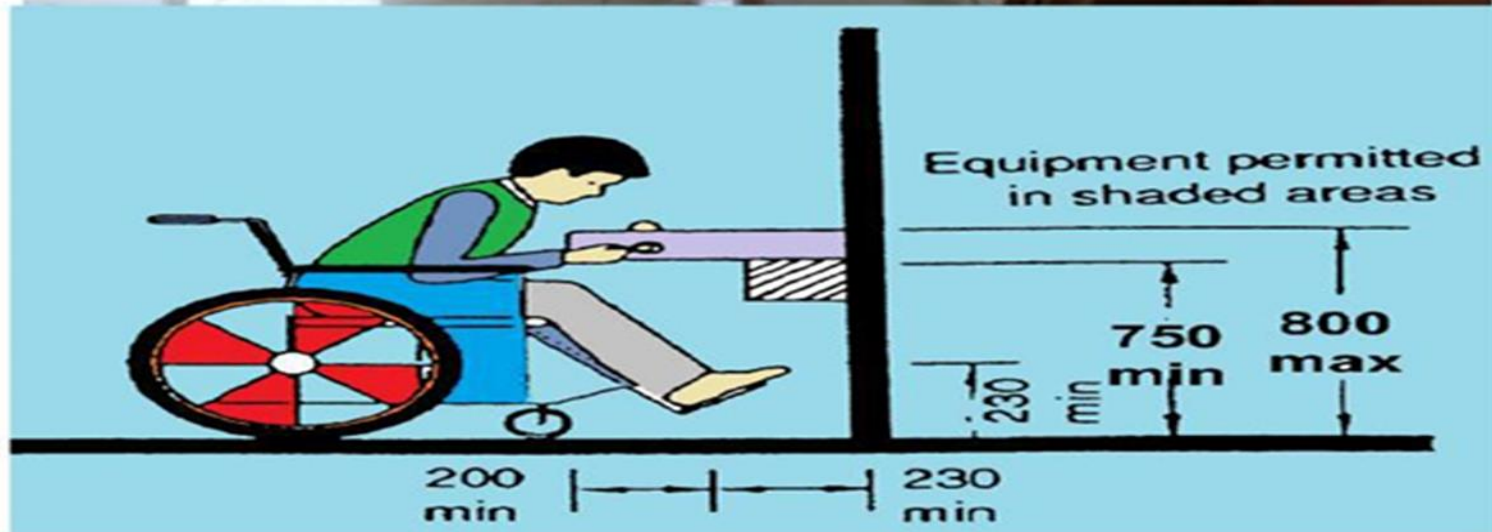
Accessibility Toilet



Accessibility Toilet



Continue ...



Common drinking area (water closet)

Continue ...



Continue...

 Ramp			
Ramp	Telephone	Lift	Parking

		 Braille
Facility for Vision Impaired	Access to Low Vision	Braille Symbol

Continue ...



Continue ...



Continue ...



Signage of accessible toilets



Unisex toilet



Gents Toilet

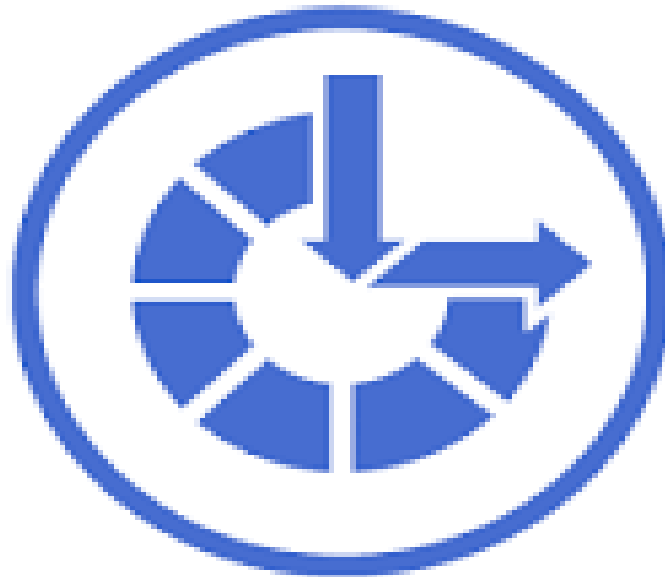
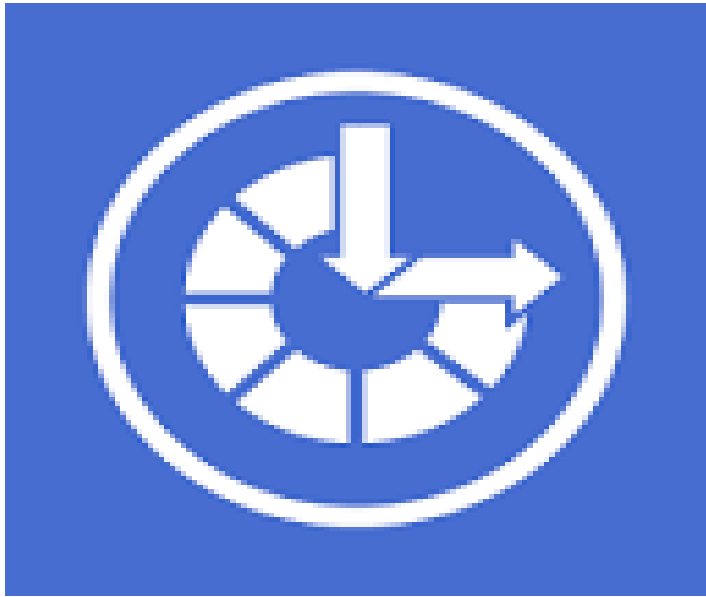


Braille locator-tactile signs



Ladies Toilet

Ease of Access Center



Ease of Access

Let Windows suggest settings
Optimize visual display

One-Handed Keyboard



Foot Pedal



Foot Pedal



NATIONAL INSTITUTE FOR EMPOWERMENT OF PERSONS WITH MULTIPLE DISABILITIES
(Department of Empowerment of Persons with Disabilities, Ministry of Social Justice and Empowerment, Govt of India)
EAST COST ROAD, MUTTUKADU, KOVALAM (POST), CHENNAI-603112

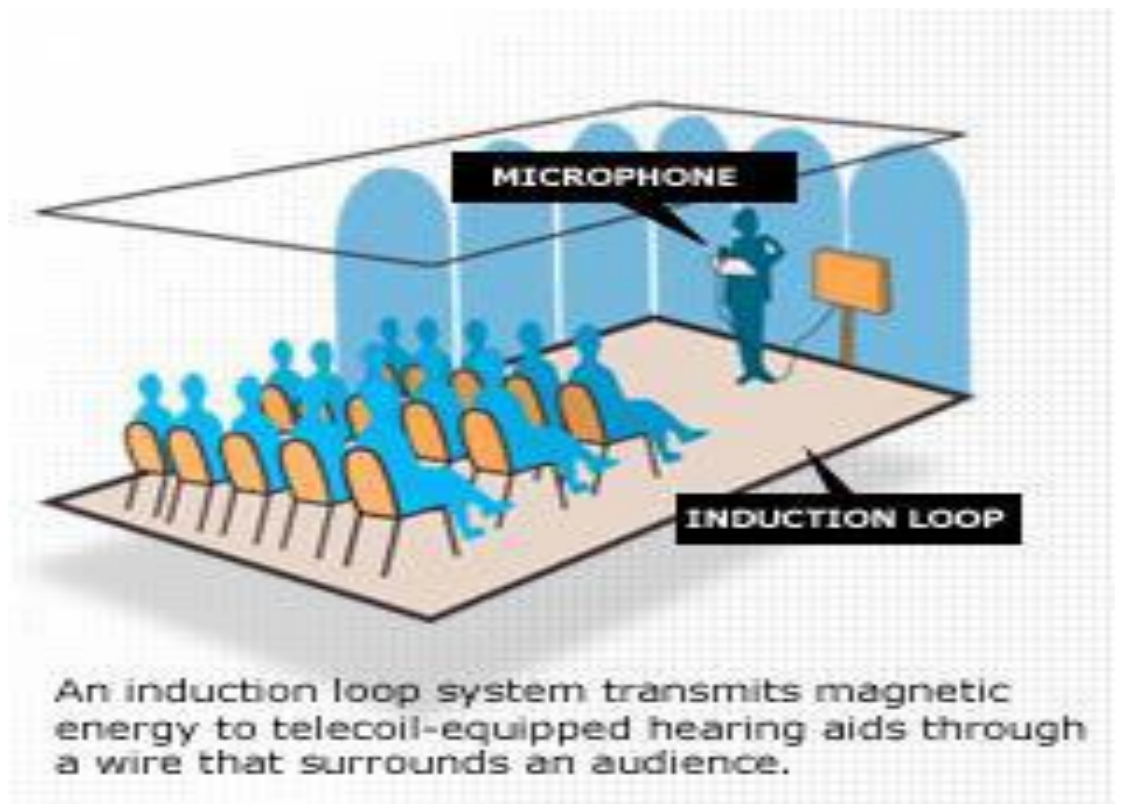
DEPARTMENT OF ADULT INDEPENDENT LIVING

INFORMATION AND COMMUNICATION TECHNOLOGY LAB FOR PERSONS WITH SPECIAL NEEDS.



Foot Pedal Mouse, is an adapted mouse that assists persons with limitations in their hands, fingers or no upper limbs, severe muscle spasm, to operate the computer and its applications by easy clicking like conventional mouse through their Foot operations and operate with the Onscreen Keyboard

Induction Loop



An induction loop system transmits magnetic energy to telecoil-equipped hearing aids through a wire that surrounds an audience.

Sticky Keys

Adaptive switches allow the physically challenged and special needs user to activate assistive technology devices in their environment. What appears as simple as a button, the proper switch will open up worlds of access to communication devices, environmental controls, computer software and mobile devices.



Keyboard



Keyboard



Your supports, makes difference



Thank You